

Tahoe Project Sediment Model

Air Water and Aquatic Environments & Department of Biological and Agricultural Engineering
 Rocky Mountain Research Station, University of Idaho
 Moscow, Idaho 83843

June, 2010

Workshop Outline June 16 – 17, 2010

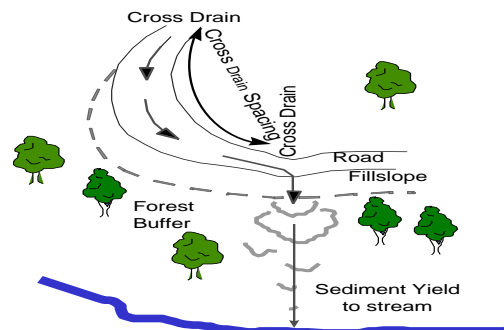
Tahoe Center for Environmental Sciences
 Sierra Nevada College
 Incline Village, Nevada

Organizers and Presenters:

Bill Elliot, Rocky Mountain Research Station, Moscow, ID
 Erin Brooks, University of Idaho, Moscow, ID
 Drea Traeumer, Em Hydrology, Reno, NV

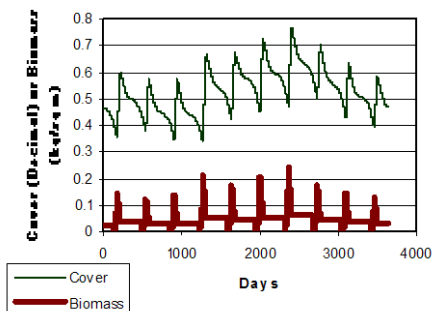
Wednesday Morning

8:30	Welcome, Housekeeping	Bill
8:45	Introductions	Bill
9:00	Overview of WEPP	Erin
10:00	Tahoe Interface Climate Selection	Bill
10:30	Tahoe Interface for Roads	Bill
11:30	Tahoe Interface for Disturbed Sites	Bill
12:30	Lunch at Cafeteria	



Wednesday Afternoon

1:30	Tahoe Interface Cover Calibrations	Bill
2:00	Tahoe interface for Fuel Mgt	Bill
3:30	WEPP Windows Tahoe Climates, Soils & Vegetation	Erin
4:30	Select Topics for Day 2	Bill & Erin
5:00	Adjourn	

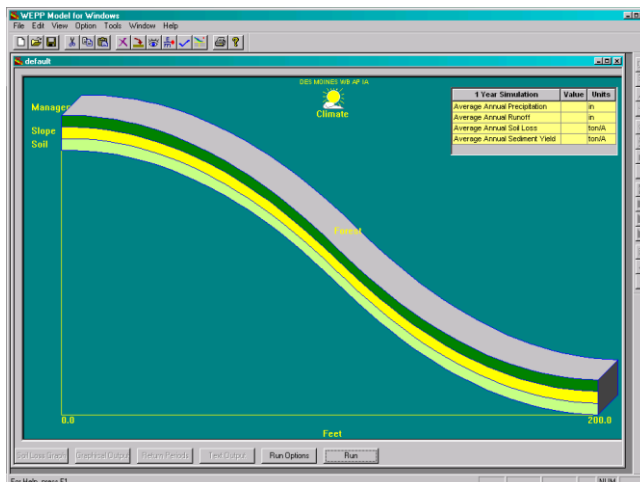


Possible Selected Topics For Day 2 (Will choose 4)

Water yield; Winter processes; GeoWEPP; Waterbars on ski slopes or trails; Future climates;
 Wildfire mitigation; Flood flows; minimum flows; Sediment basins (hill slope or watershed); Others ...

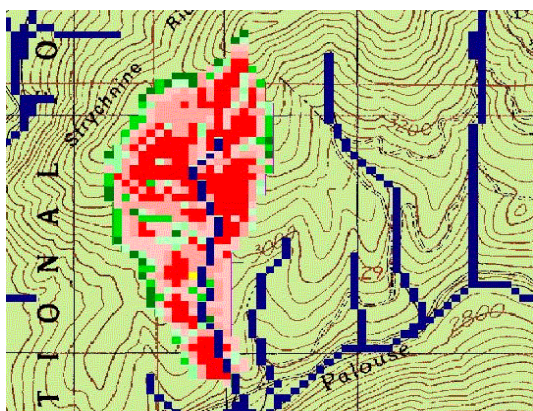
Thursday Morning

- 8:30 Selected Topic 1 Bill or Erin
- 9:45 Selected Topic 2 Bill or Erin
- 11:00 Selected Topic 3 Bill or Erin
- 12:15 Lunch at Cafeteria



Thursday Afternoon

- 1:15 Selected Topic 4 Bill or Erin
- 2:45 Tahoe Project Sediment Model Interface Needs Drea
- 3:15 Workshop Evaluation Erin
- 3:30 Adjourn



Software sites:

FSWEPP:

<http://forest.moscowfsl.wsu.edu/fswepp/>

WEPP software and documentation: <http://www.ars.usda.gov/Research/docs.htm?docid=18084>

GeoWEPP software & documentation site: <http://www.geog.buffalo.edu/~rensch/geowepp/>

Email addresses:

welliot@fs.fed.us

ebrooks@uidaho.edu

drea.em@gmail.com

GeoWEPP developer Chris S. Renschler - rensch@buffalo.edu

Lodging List for the

Tahoe Center for Environmental Sciences (TCES) Hosted Events

*Please call to inquire about room rates as they vary by season and group occupancy

Incline Village

Hyatt Regency Lake Tahoe

Located at 111 Country Club Drive (walking distance to TCES), Incline Village, NV. Call 775-832-1234.

<http://laketahoe.hyatt.com/hyatt/hotels/index.jsp>

*Special Group Room Rates can be arranged through Sales if at least 10 rooms are reserved. Call ahead for more information.

Parkside Inn at Incline

Located at 1003 Tahoe Blvd (walking distance to TCES), Incline Village, NV. Call 1-800-824-6391 or locally 775-831-1052.

<http://www.innatincline.com/>

Crystal Bay

CalNeva

Located at 2 Stateline Rd, Crystal Bay, NV (requires transportation to TCES). Call 1-800-225-6382.

<http://www.calnevaresort.com/accommodations.php>

Kings Beach

Ferrari's Crown

Located at 8200 N. Lake Blvd, Kings Beach, CA (requires transportation to TCES). Call 530-546-3388.

<http://www.tahoecrown.com/lake-front-lodging>

***Preferred lodging for TCES events. Additional discounted pricing sheet available (contact jcfalman@ucdavis.edu for pricing list).**

Public Transportation

The Tahoe Area Regional Transit (TART) is the bus system for the north shore. The bus stops across the street from TCES.

<http://www.placer.ca.gov/Departments/Works/Transit/TART.aspx>

Taxi Options

North Tahoe Checker: 775-833-0707

Alpine Taxi: 530-546-3232

Or visit www.laketahoetransit.com for more North Lake Tahoe transportation info

Map of Nearby Restaurants and Hotels



Lodging

- 1 Parkside Inn at Incline
- 2 Hyatt Regency

Coffee Shops

- 3 Starbucks
- 4 Art's Coffee House

Restaurants

- 5 Austin's
- 6 Thai Recipe
- 7 T's Mesquite Rotisserie
- 8 Mofo's Pizza and Pasta
- 9 Yoshimi Sushi
- 10 Asian Noodles Too
- 11 Crosby's

Restaurants/Delis

- 12 Wild Alaskan
- 13 Sunshine Bakery
- 14 Lone Eagle Grill \$\$\$\$
- 15 Black Bear Deli
- 16 Raley's Deli
- 17 Grog & Grist Deli
- 18 Village Market Deli

TCES building

X Location of Symposium

Parking

- P SNC campus parking
- OP Overflow parking at Hyatt

Driving Directions to the Tahoe Center for Environmental Sciences Building
Located on the Campus of Sierra Nevada College
291 Country Club Drive
Incline Village, NV 89451



From Tahoe City

- Proceed EAST on CA-28 / N LAKE BLVD. Continue to follow CA-28 (Crossing into NEVADA).
- Continue EAST on SR 28 (Tahoe Boulevard) through Incline Village until you reach Country Club Drive (the third traffic light in Incline Village, located past the golf course).
- Turn RIGHT onto COUNTRY CLUB DR.
- Turn RIGHT at the THIRD DRIVEWAY onto the Sierra Nevada College campus (entrance located directly across from Mill Creek residential street). There is a parking lot located to your right and a loop driveway directly in front of the Tahoe Center for Environmental Sciences building.
- Walk on the path between the two buildings (Prim Library will be on your right, the Tahoe Center for Environmental Sciences will be on your left). This path will lead you to the front entrance of Tahoe Center for Environmental Sciences located on the north side of the building.

From South Lake Tahoe

- Proceed EAST on LAKE TAHOE BLVD / US-50. Continue to follow US-50 E (Crossing into NEVADA).
- Turn LEFT onto NV-28.
- Turn LEFT onto COUNTRY CLUB DR.
- Turn RIGHT at the THIRD DRIVEWAY onto the Sierra Nevada College campus (entrance located directly across from Mill Creek residential street). There is a parking lot located to your right and a loop driveway directly in front of the Tahoe Center for Environmental Sciences building.

- Walk on the path between the two buildings (Prim Library will be on your right, the Tahoe Center for Environmental Sciences will be on your left). This path will lead you to the front entrance of Tahoe Center for Environmental Sciences located on the north side of the building.

From Reno

- US-395 SOUTH toward CARSON CITY.
- Merge onto NV-431 / MT ROSE HWY via EXIT 56 toward MT ROSE / NO LAKE TAHOE.
- Continue on NV-431 toward North Lake Tahoe until you reach Country Club Drive.
- Turn LEFT onto COUNTRY CLUB DR and proceed south until you reach TAHOE BLVD / NV-28.
- Continue straight on COUNTRY CLUB DR.
- Turn RIGHT at the THIRD DRIVEWAY onto the Sierra Nevada College campus (entrance located directly across from Mill Creek residential street). There is a parking lot located to your right and a loop driveway directly in front of the Tahoe Center for Environmental Sciences building.
- Walk on the path between the two buildings (Prim Library will be on your right, the Tahoe Center for Environmental Sciences will be on your left). This path will lead you to the front entrance of Tahoe Center for Environmental Sciences located on the north side of the building.

From San Francisco & Sacramento (via Interstate 80)

- I-80 E toward RENO.
- Take the CA-89 / CA-267 exit- EXIT 188B- toward SIERRAVILLE / LAKE TAHOE.
- Turn RIGHT onto GLENN CARLSON MEMORIAL BYP / CA-267 / TRUCKEE BYP. Continue to follow CA-267 south over Brockway Summit toward Lake Tahoe.
- Turn LEFT onto CA-28 / N LAKE BLVD. Continue to follow CA-28 (Crossing into NEVADA).
- Turn RIGHT onto COUNTRY CLUB DR.
- Turn RIGHT at the THIRD DRIVEWAY onto the Sierra Nevada College campus (entrance located directly across from Mill Creek residential street). There is a parking lot located to your right and a loop driveway directly in front of the Tahoe Center for Environmental Sciences building.
- Walk on the path between the two buildings (Prim Library will be on your right, the Tahoe Center for Environmental Sciences will be on your left). This path will lead you to the front entrance of Tahoe Center for Environmental Sciences located on the north side of the building.